

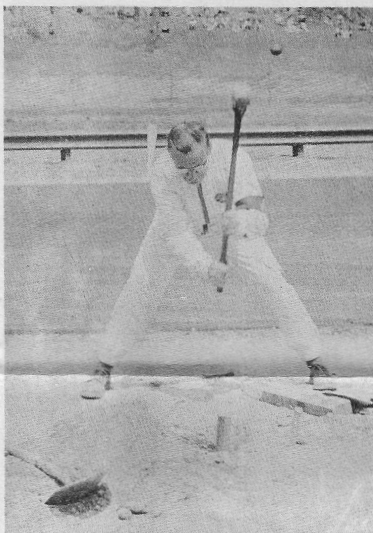
(25) Concourse Judges discuss virtues of Don Blodgetts' Mercedes 190 SL.



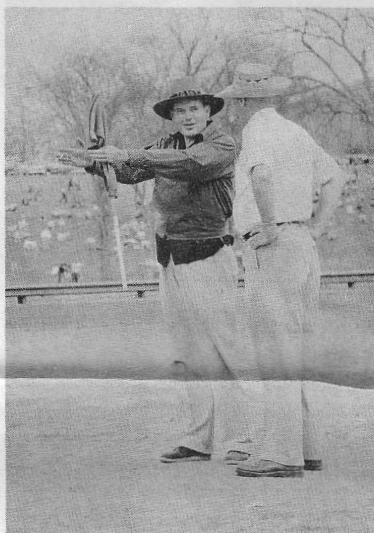
(26) Chairman of the Gymkhana Stewart Rutherford makes an announcement prior to the start.



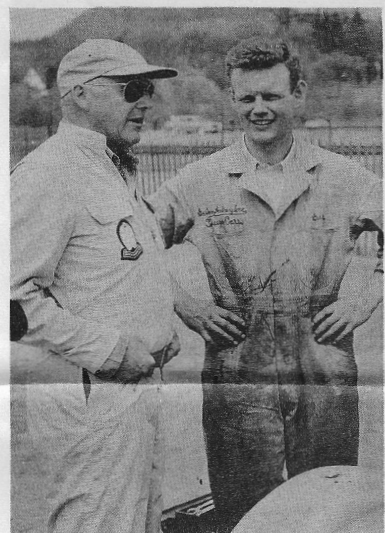
(27) Starter Britt Ragsdale displays start finish banner.



(28) All is not head work in organizing a race meet.



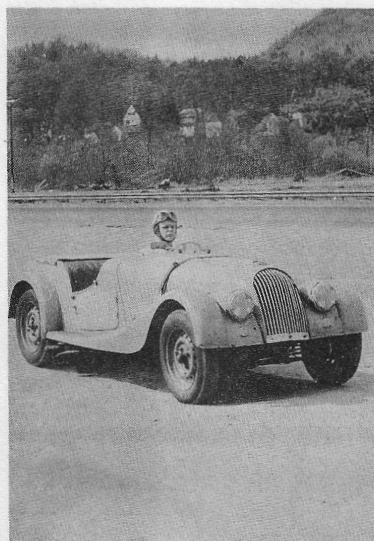
(29) Starter Britt Ragsdale explains starting technique to Selectman of Lime Rock prior to start of inaugural race.



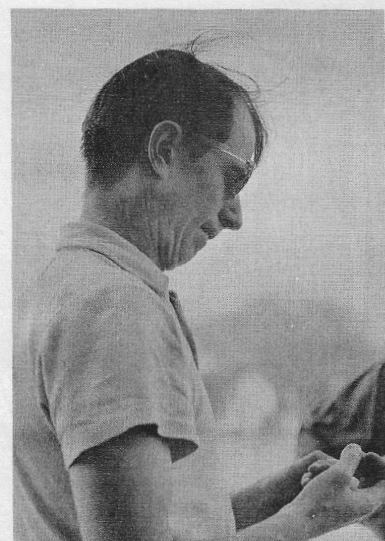
(30) George Felton and Gaston Andrey in a little pre-race discussion.



(31) Ted Andrews asks for course check prior to start of a race.



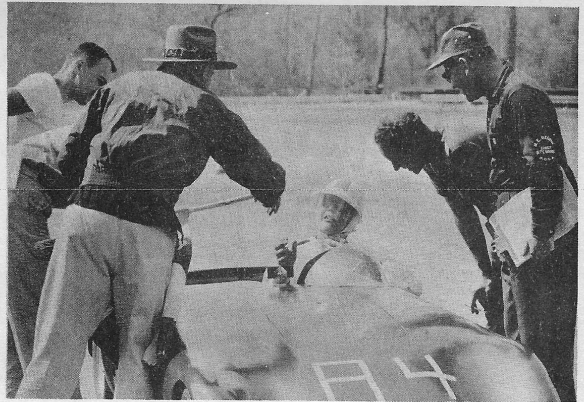
(32) Gaston pulls into pit with disgusted look after having been forced out of race with a broken bowl on fuel pump.



(33) John Fitch contemplates coming race.



(34) Selectman breaks tape to officially open Lime Rock as under 1500 cc cars line up on grid for first race.



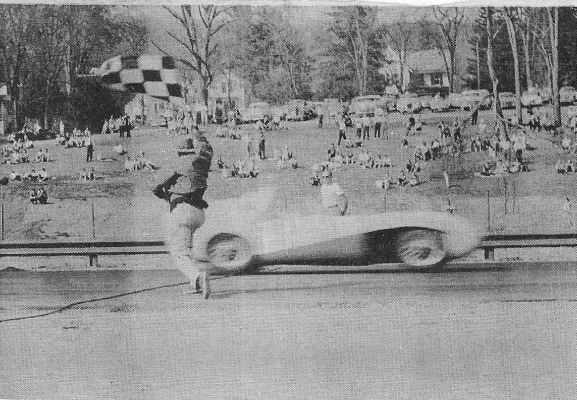
(35) Britt and Ted Andrews congratulate driver of car #84 after his winning his sprint.



(36) ???? pulls into pits to accept checkered flag and make his victory lap.



(37) Ted Spriggs receives congratulations from Doc Knight after Teds win in his Alfa.



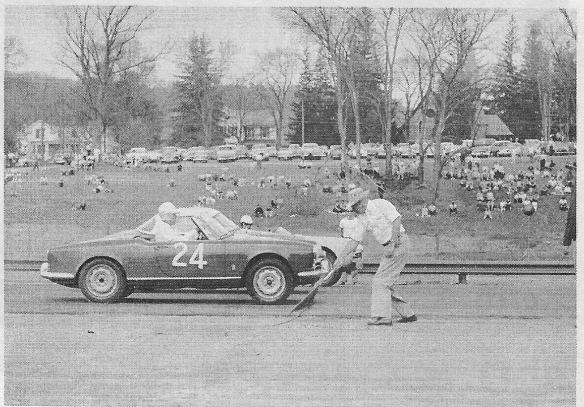
(38) Britt drops checker as Len Bastrup flashes across finish to win his race.



(39) Walt Hansgen in pits immediately after his victory in feature race of the day. Car was one of Cunninghams D type Jaguars.

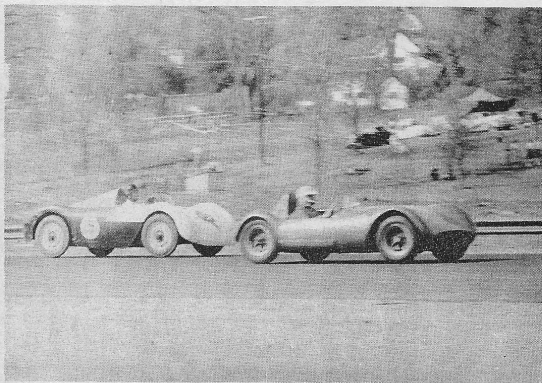


(40) The Eleventh Commandment. "Thou shalt not pass two black flags in succession."

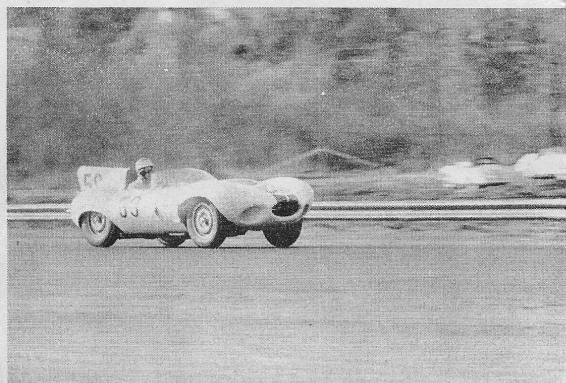


(41) Selectman of Lime Rock drops flag for Inaugural under 1500 cc race.

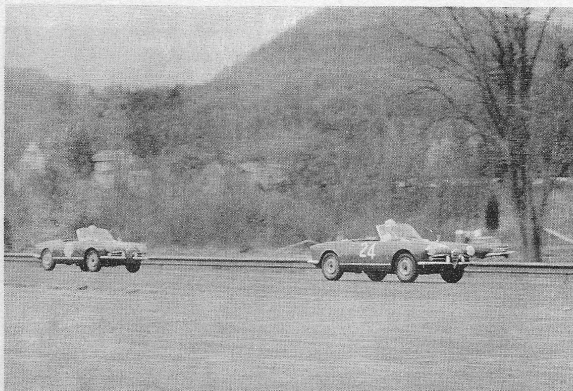




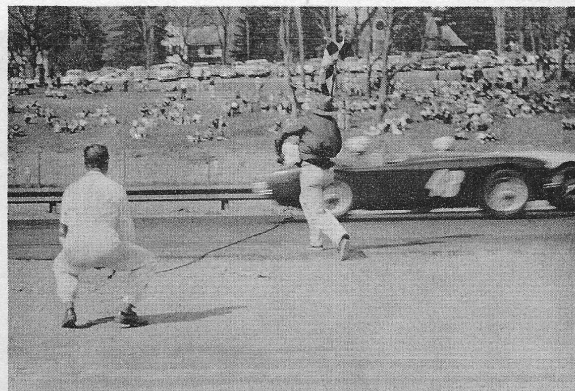
(42) Rutans VW Special about to overtake Seidels Jomar in their heat.



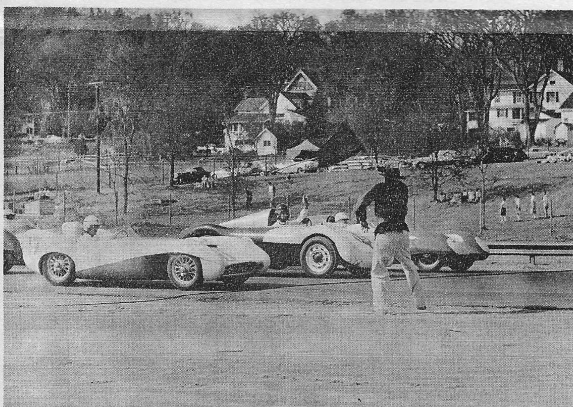
(43) John Fitch at speed in a Jaguar during feature race. John finished second to Walt Hansgen also in a Jaguar.



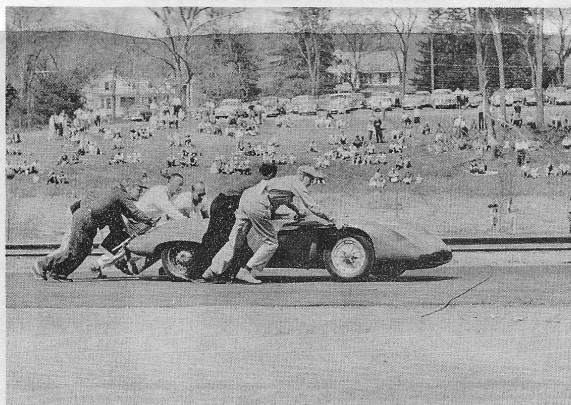
(44) Two Alfas on the straight.



(45) A close one. Doc Knight acts as Judge as starter Britt Ragsdale drops checker - Evelyn Mull a close second.



(46) Starter Britt Ragsdale drops flag for start of race. Len Bastrup on inside Charlie Rutan in middle of grid.



(47) Some of the cars needed a little coaxing to start.



(48) John Fitch gets a hand from his pit crew prior to start of feature race. Walt Hansgen on right waits for start.



(49) John Fitch studies instrument panel prior to start of feature race.